

50 COLERAINE

RIVERCLUB

Sandton



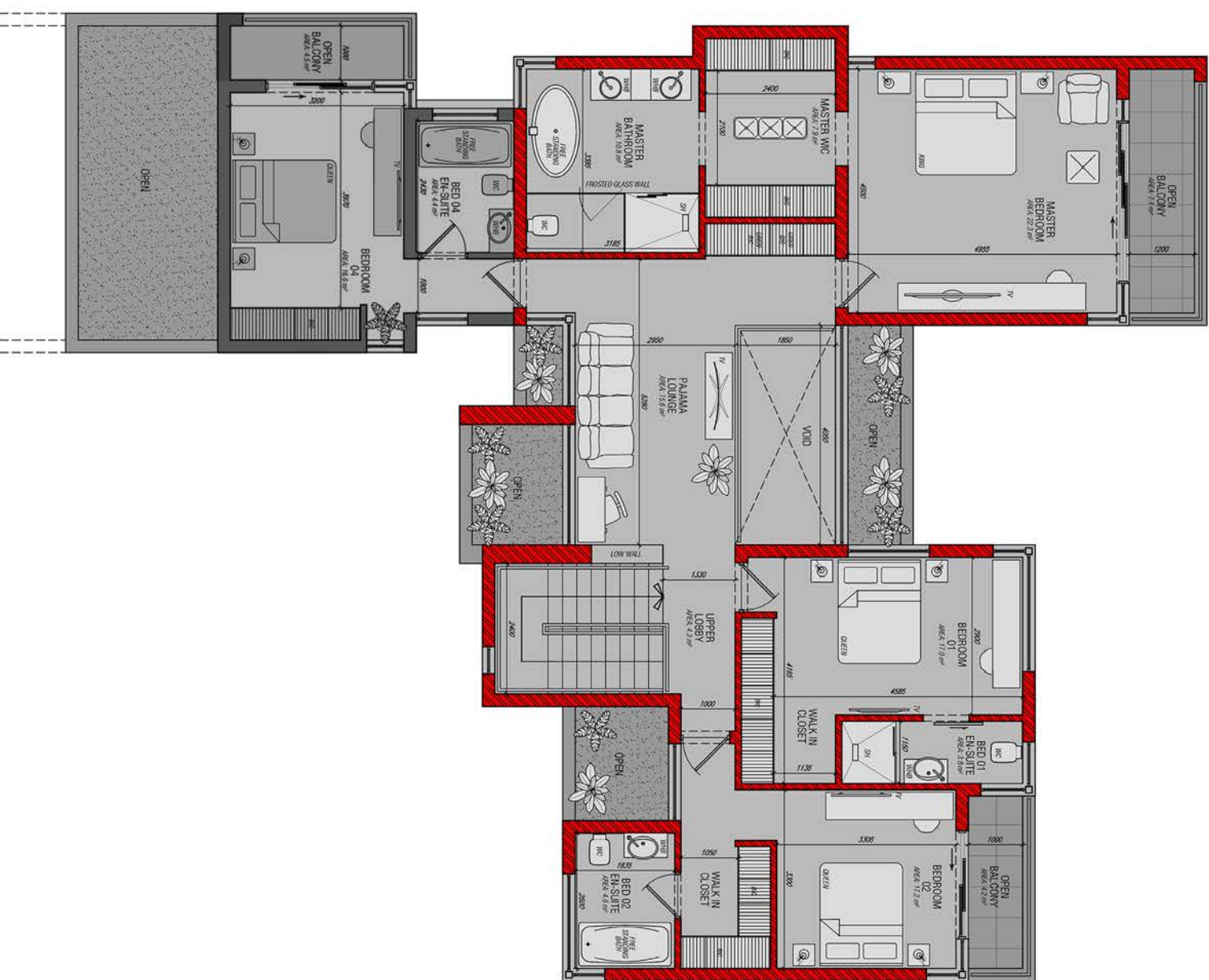
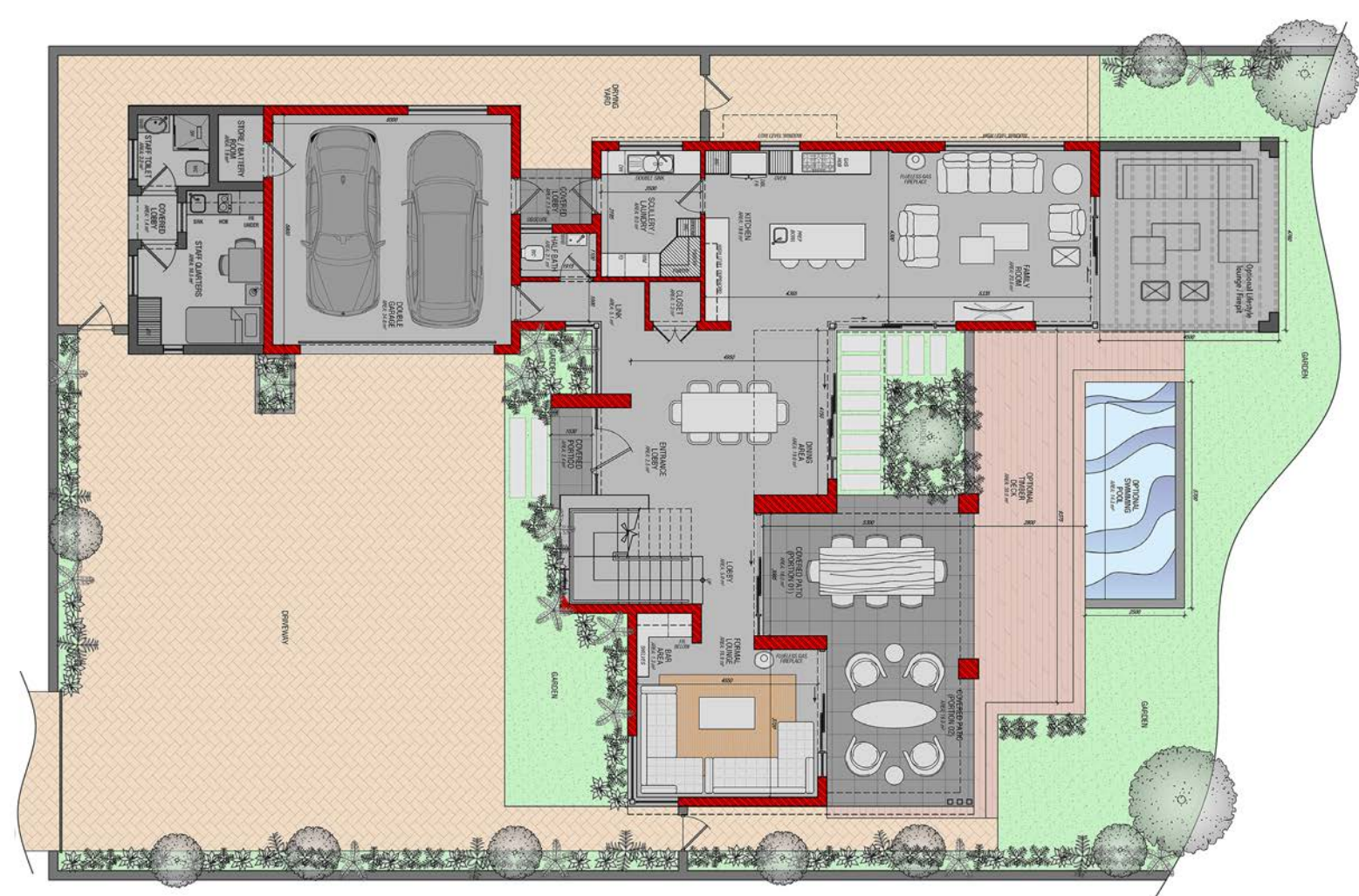
LUXURY LIVING IN A PREMIER SANDTON ADDRESS



4/5 BED EN-SUITE + EXECUTIVE OFFICE LUXURIOUS & SECURE

Individually designed homes offers spacious living on \pm 900sqm stands in an established and secure estate.

- Voluminous entrance leading into a spacious open plan dining area
- Seamless flow of indoor outdoor living
- High quality finishes throughout
- Formal lounge with entertainers bar opening onto the covered terrace
- Lush garden with sparkling pool and deck
- Designer kitchen, breakfast nook and a center Island with separate scullery and laundry
- Spacious main Bedroom en-suite with walk-in dressing room, private lounge and balcony
- Lavish en-suite bedrooms with balconies
- PJ lounge
- Executive office suite
- Staff quarters
- Double garages or more / ample visitors parking
- Secure estate with 24hr security / guardhouse
- Optional Gym | Home theatre
- Optional Wine cellar / Cigar lounge
- Optional Lifestyle lounge / fire pit



Portion 1 & 2

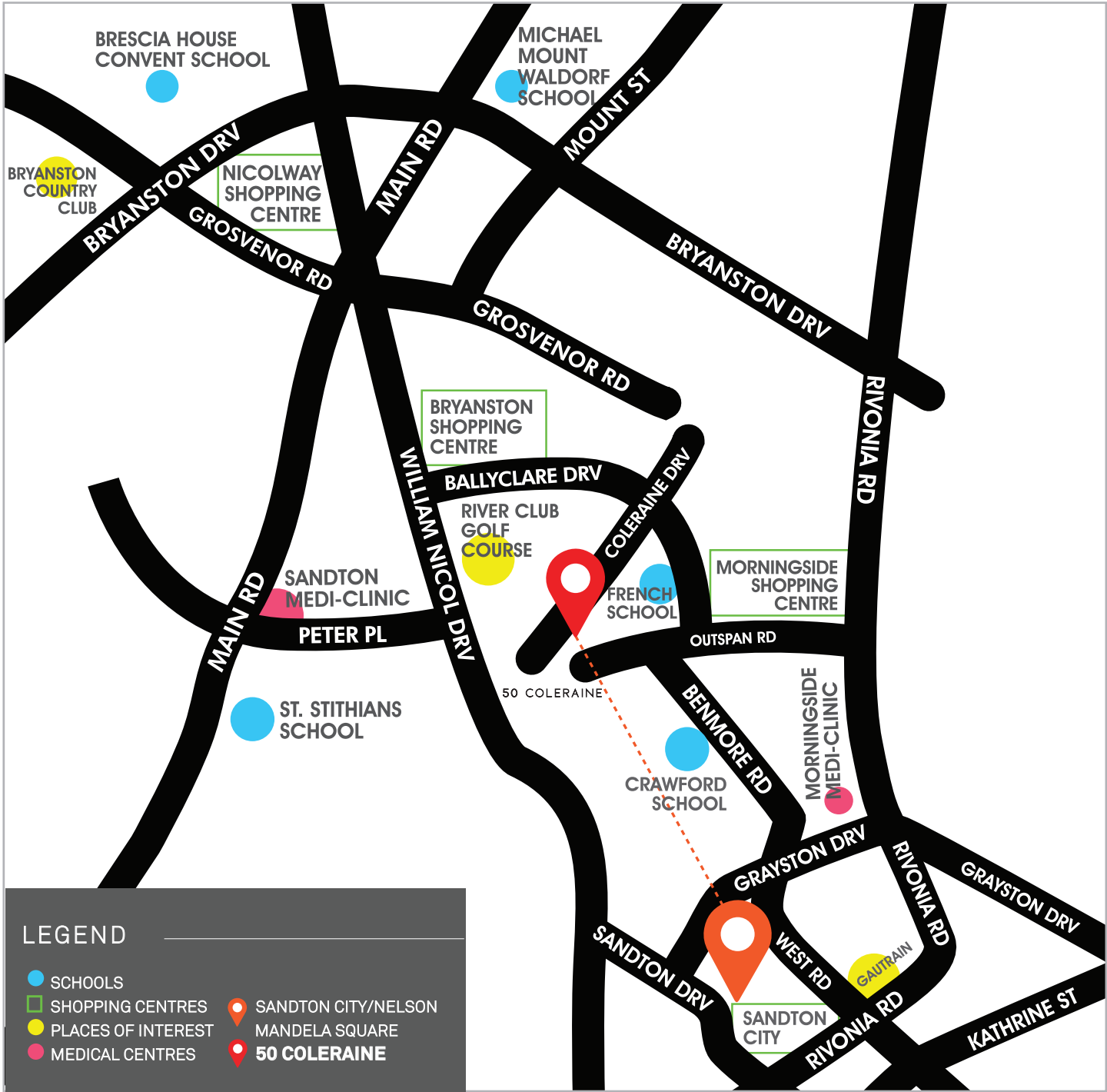
Covered areas	320 sqm
Covered Patio / Entrance	40 sqm
Open Patio / Balcony	15 sqm
Deck	20 sqm
Pool & Water Features	

TOTAL **395 sqm**

R9 904 000
Vat Inclusive

Optional Lifestyle Lounge & Fire pit

TYPICAL FLOOR PLAN
* Price may vary according to client specification of individually designed home.
* Prices subject to change.



EXCLUSIVE LOCATION

**50 COLERAINE DRIVE,
BRYANSTON**
GPS 26°04'49.2'S 28°02'36.7'E

Situated minutes from the Sandton CBD.

Shopping Centres - Sandton City, Nelson Mandela Square,
Morningside & Hyde Park
Schools - Crawford Sandton,
Redhill, French School, St David's & St Stithians
Clinics - Sandton & Morningside
Country Clubs - Riverclub & Bryanston Country Club



35 Years of Property Excellence & Over 270 Unique Developments. Innovative in our thinking.
Dynamic in our approach and evolutionary in our achievements